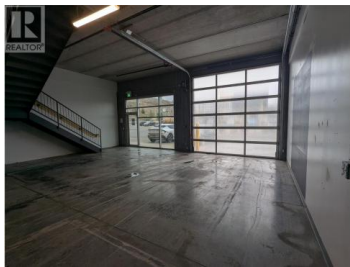
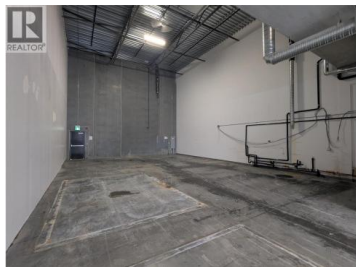


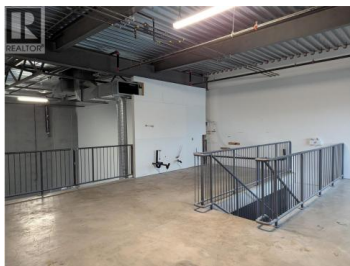
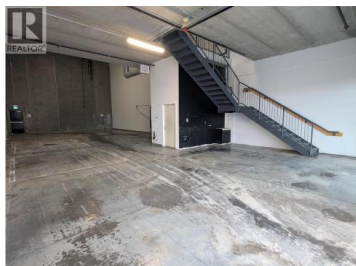
2030 Matrix Crescent 108 Kelowna British Columbia

University District

\$5,500



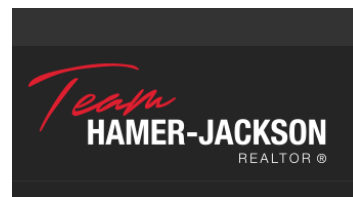
Great opportunity to lease a 3,299 square foot warehouse unit in the heart of Kelowna's Airport Business Park. Features include an open layout with a 12'x12' glass overhead door, washroom, mezzanine, three parking stalls, and loading area. This is a gross lease at \$5,500/month plus GST and utilities. No triple net. (id:6769)



Sol Benson

Venture Realty Corp.

Phone: (250) 317-1077



RE/MAX Kelowna
100-1553 Harvey Avenue
Kelowna, BC,
Canada