

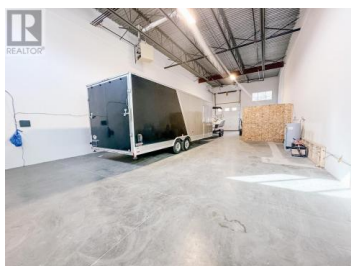
210 Lougheed Road 108 Kelowna British Columbia

North Glenmore

\$890,000



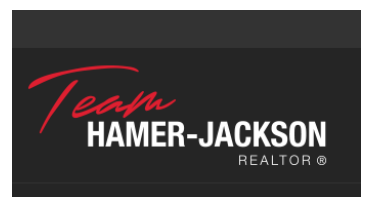
2,400sf Ground Floor Concrete Industrial Strata Unit centrally located near Adams Road. Open warehouse ground floor unit with potential to build out mezzanine. Three Phase 200 Amp Power, 12x14 overhead door and washroom. Unit will be vacant on closing. I-1 zoning allows for many uses. (id:6769)



Stefani Lea

Royal LePage Kelowna

Phone: (250) 870-0730



RE/MAX Kelowna
100-1553 Harvey Avenue
Kelowna, BC,
Canada