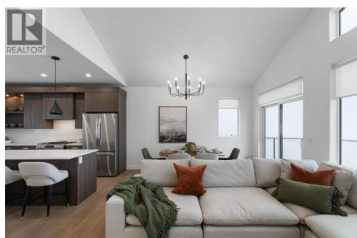




2400 Coldwater Drive 108 Kamloops British Columbia

Juniper Ridge

\$738,800



Welcome to Phase 4 at The Landing in Juniper West, a sought-after neighbourhood surrounded by parkland, scenic trails, and beautiful views of the river and mountains. With low bareland strata fees, this basement-entry duplex offers a quiet and peaceful setting with a functional layout. The lower entry level features a den, a family/living room, one bedroom, and a full bathroom, providing flexible space for guests, a home office, or additional living area. Upstairs you'll find the bright open-concept main living, with vaulted ceilings, a spacious kitchen plus upgraded LG appliances. The dining area has access to the deck, perfect for enjoying the surrounding views. This main level is complete with a laundry room with stacked LG Washer and Dryer, two bedrooms, one of which is the primary suite featuring an upgraded MDF walk-in closet and private ensuite with double vanity. The fully fenced backyard backs onto green space, offering privacy and a natural setting. Built to Step Code 4; this home is near net-zero-energy and considered high performance for energy efficiency in new construction. Unit 108 features a light interior colour scheme, and includes window coverings, upgraded LG Appliances and upgraded MDF master walk-in closet. Estimate Completion Early Fall 2026

Please note, interior listing photos and video are from Unit 101 and exterior shots are from Unit 106 (id:6769)



RE/MAX Kelowna
 100-1553 Harvey Avenue
 Kelowna, BC,
 Canada

Christa Palasty

eXp Realty (Kamloops)

Phone: (250) 377-5294

