

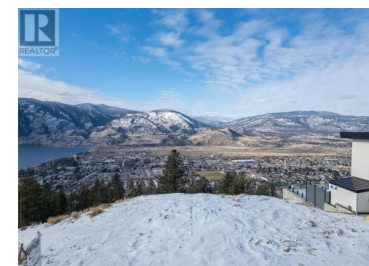
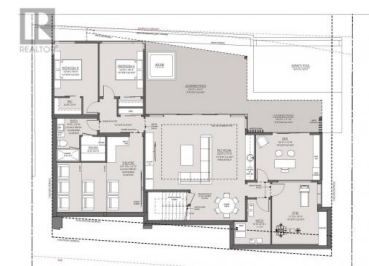
3331 Evergreen Drive 108 Penticton British Columbia

Wiltse/Valleyview

\$1,999,000



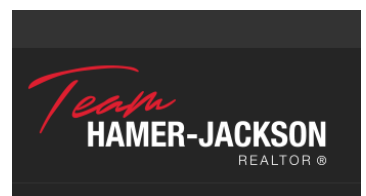
Welcome to 108-3331 Evergreen Drive in Skaha Bluff Estates. Experience luxury living in this stunning to-be-built rancher with a walkout basement, offering breathtaking lake and mountain views. The main floor features an open-concept living, dining, and kitchen area with a pantry, seamlessly extending to a spacious deck. The primary suite boasts a spa-like 5-piece ensuite with a soaker tub and walk-in closet, alongside a second bedroom and 3-piece bath. The walkout basement is designed for entertainment and relaxation, featuring a large rec room with a wet bar, media room with a snack bar, gym space, a den/office, two additional bedrooms, and a 3-piece bath complete with a sauna. Step outside to a covered patio from the rec room. Option to add an infinity pool upgrade. Complete with a double-car garage, this home blends elegance and functionality in an unbeatable location. Bareland strata fee of \$193.02/mth includes your management, pets allowed and no age restrictions. Option to buy just the lot also and build your dream home of choice! Contact the listing agent to learn more about this property! (id:6769)



Wes Stewart

Royal LePage Locations West

Phone: (250) 486-2794



RE/MAX Kelowna
 100-1553 Harvey Avenue
 Kelowna, BC,
 Canada