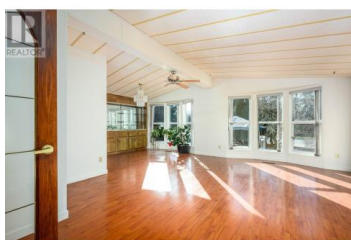
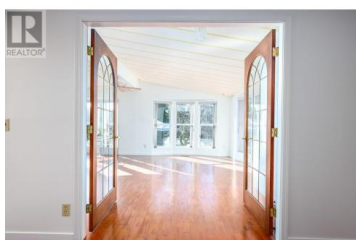


720 Commonwealth Road 108 Kelowna British Columbia

Lake Country East / Oyama

\$359,900



Tremendous value in this recently updated and spacious modular home—approximately 2,400 sq ft—located in the family section of Meadowbrook Estates, one of the best-kept and most well-managed parks in the region. This home offers 4 bedrooms, 2 full bathrooms, and two fully enclosed garages (one heated), plus plenty of parking for your recreational vehicles and toys. Key upgrades are already complete: a newer energy-efficient central A/C system services the main area, there's a second gas furnace for the addition, and the roof still has plenty of life left. The primary suite features a walk-in closet and a spacious ensuite. The yard is beautifully landscaped yet low-maintenance, and the home is just minutes from the scenic Okanagan Rail Trail and transit routes. It's also conveniently located close to the airport and just steps away from the popular Thyme restaurant. This home offers great value, generous space, and flexible living in a fantastic location. Rentals and pets are allowed. (id:6769)

Chris Docksteader

RE/MAX Kelowna

Phone: (250) 212-2233

<http://www.chrisdocksteader.com/>



RE/MAX Kelowna
100-1553 Harvey Avenue
Kelowna, BC,
Canada