

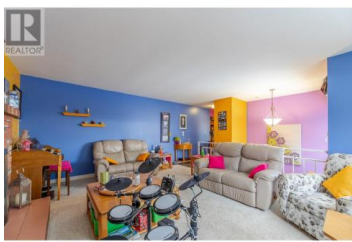
10811 Dunham Crescent Summerland British Columbia

Main Town

\$799,900



This charming and colourful 4 bedroom, 2 bathroom home offers a private setting with lovely views of the surrounding mountains. Situated on a large 0.42-acre lot, the property is perfect for family living, with plenty of space for pets, outdoor entertainment, and more. The home features a new roof, high efficiency furnace, 200-amp electrical service, a spacious entertainment deck, and a detached 20x24 ft. double garage. Additional open parking is available in the spacious driveway and the home's location is convenient to schools, parks and all downtown amenities! (id:6769)



Shelley Parker

Parker Real Estate

Phone: (250) 460-2855

<http://parkerproperty.ca/>



RE/MAX Kelowna
100-1553 Harvey Avenue
Kelowna, BC,
Canada