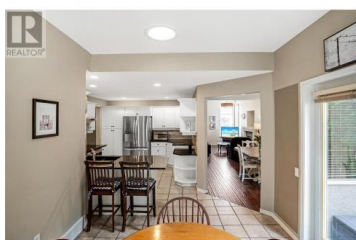




1083 Chilcotin Crescent Kelowna British Columbia

Dilworth Mountain

\$1,099,000



Beautiful Family Home in Sought-After Dilworth Estates! Nestled in one of Kelowna's most desirable neighborhoods, this stunning family home offers over 2,200 sq. ft. of thoughtfully designed living space--plus an additional 1,500+ sq. ft. of unfinished basement ready for your personal touch! The ideal floor plan features a main-floor primary suite with a private ensuite, along with a versatile den(or 5th bedroom) perfect for a home office. Upstairs, you'll find three generously sized bedrooms and a full bath, providing plenty of room for a growing family. Recent renovations elevate this home, from its beautifully updated exterior to the hardwood flooring and granite countertops inside. The modern kitchen shines with granite counters, a stylish backsplash, stainless steel appliances, and a charming breakfast nook--complemented by a separate formal dining room. Outside, enjoy an easy-care yard with a private, park-like setting, just steps from Dilworth Mountain Park's scenic hiking trails. Quiet, no-through street, this home offers ample parking, including a double garage and RV space. THE MOST CENTRAL LOCATION IN KELOWNA, you're just minutes from Glenmore Ecole Elementary, Dr. Knox Middle School, Watson Rd. Middle School, North Glenmore Elementary, downtown Kelowna, Orchard Park Shopping Center, the airport, beaches, pubs, restaurants, you name it! This is an opportunity yo...



RE/MAX Kelowna
100-1553 Harvey Avenue
Kelowna, BC,
Canada

Krista Suchar

RE/MAX Kelowna

Phone: (250) 870-7653

