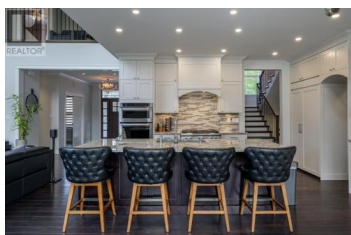


10888 LOLLAND Crescent Prince George British Columbia
\$1,579,000

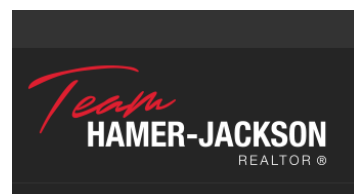


This stunning home is designed to impress, offering vaulted ceilings and a gourmet chef's kitchen complete with a butler's pantry, quartz countertops, gas stove, and dual wall ovens - an entertainer's dream! With 6 spacious bedrooms and 4 bathrooms. The master bedroom boasts a large walk-in closet and a luxurious ensuite perfect for relaxation. The basement is unfinished but can easily be suited. Outside, enjoy a beautifully manicured lawn and landscaped yard. The property features an attached triple car garage, providing ample parking and storage, along with a heated 40 x 36 shop equipped with its own bathroom and mezzanine for additional workspace or storage. This property truly is a "Must See"! All measurements are approximate, and buyers should verify if deemed important. (id:6769)

Denise Dunn

Royal LePage Aspire Realty

Phone: (250) 612-2061



RE/MAX Kelowna
100-1553 Harvey Avenue
Kelowna, BC,
Canada