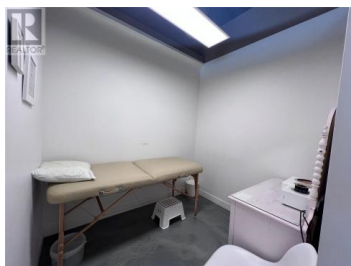
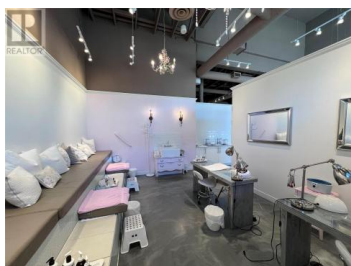




1924 Summit Drive 109 Kelowna British Columbia

North Glenmore

\$34



Excellent opportunity to lease a fully improved spa/wellness retail unit in the heart of Glenmore. High profile location at the signalized intersection of Summit Drive and Glenmore Road. This 1,323 sf unit is beautifully built-out to include an open retail area, 5 private treatment rooms, two bathrooms and staff area with washer and dryer. Ideal for spas, salons, and/or professional services. Hillside Plaza offers tenants the opportunity to join Dairy Queen, Murray's Pizza, Glenmore Dental, New Empress Restaurant, a pharmacy, private liquor and cannabis store and a walk-in medical clinic. Pylon signage opportunities are available at market rents. (id:6769)

Christopher Wills

Venture Realty Corp.

Phone: (250) 870-1330

<https://venturecommercial.ca/>



RE/MAX Kelowna
100-1553 Harvey Avenue
Kelowna, BC,
Canada