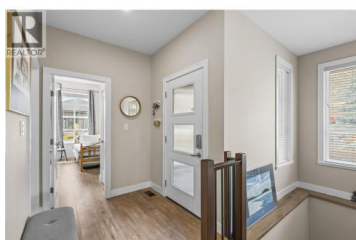




641 SHUSWAP Road 109 Kamloops British Columbia

South Thompson Valley

\$789,900



Excellent opportunity to own one of the best units in Sienna Ridge. Step inside the front door of this level-entry "C-Plan" rancher and you will find a wide entryway with plenty of room to come inside. Adjacent to the front door is another entryway with a mudroom/laundry rm off the garage. The main floor is open concept with large windows, 11ft ceilings, new floors (2025), & gorgeous kitchen. The kitchen features stone countertops, ample cupboard space, gas range, cupboard lighting, & a large island that is perfect for entertaining. Adjacent to the kitchen is a dining area with room to accommodate a large table & a living room with high-end gas fireplace feature. Off the dining room is a large covered deck with a great view. The primary bedroom suite has a large storage cabinet, walk-in closet, & spacious 4pc ensuite bathroom with tiled shower. Also on the main floor is an additional 4pc bathroom and a spacious second bedroom. Downstairs you will find a walk-out daylight basement. This level has recently been partially finished with a 3rd bedroom, and a beautiful 4pc bathroom. The additional unfinished space presents an easy opportunity to fully finish with a 4th bedroom, large rec room, and storage room or other configurations. Outside this home has a beautiful & private yard. There is beautiful landscaping & staircase to the yard for easy access. 2 car garage with large do...



RE/MAX Kelowna
100-1553 Harvey Avenue
Kelowna, BC,
Canada

Kevin Bamsey

Century 21 Assurance Realty Ltd

Phone: (250) 377-3279

<http://www.ykahomes.com/>

