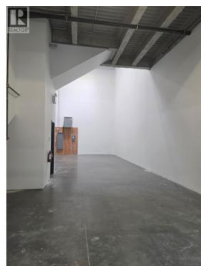
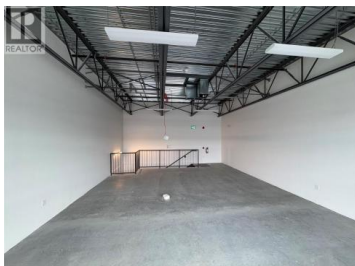
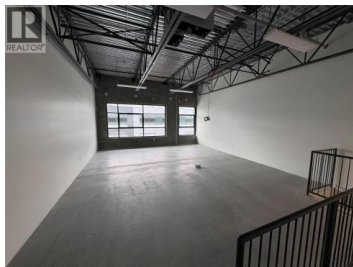


9670 McCarthy Road 109 Kelowna British Columbia
 Lake Country East / Oyama
\$16



Position your business for success at IntraUrban McCarthy, a premier industrial development in the heart of Kelowna's thriving North End industrial corridor. This exceptional lease opportunity is part of a collection of 37 modern strata industrial units, thoughtfully designed to meet the needs of today's small and medium-sized businesses. Featuring flexible floor plans and contemporary design, these premium industrial spaces offer the versatility to accommodate a wide range of uses including warehousing, distribution, light manufacturing, trade services, showroom, and office applications. High-quality construction and modern finishes provide a professional environment that supports both operational efficiency and business growth. Strategically located with convenient access to Highway 97, the property offers excellent connectivity throughout the Okanagan and beyond. Surrounded by established businesses, commercial services, and key amenities, IntraUrban McCarthy places your business in one of Kelowna's most sought-after industrial markets. Whether you're expanding, relocating, or establishing a new operation, this is an outstanding opportunity to secure premium industrial space in a rapidly growing business hub. (id:6769)

Graeme Magee

Coldwell Banker Executives Realty

Phone: (250) 306-6690



RE/MAX Kelowna
 100-1553 Harvey Avenue
 Kelowna, BC,
 Canada

