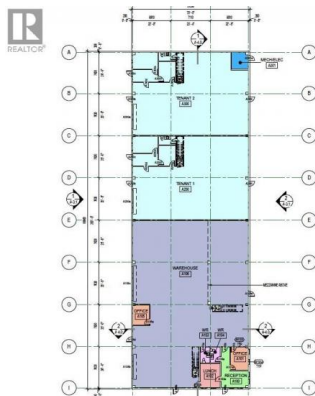
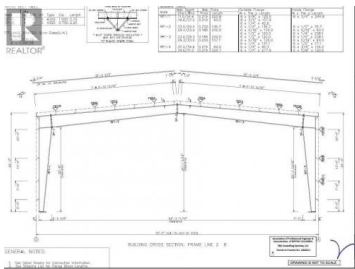


ISSUED FOR REVIEW

PROJECT IMAGE:

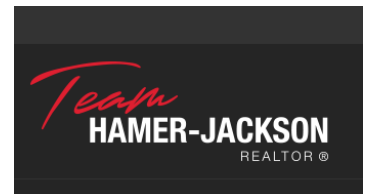


Commercial lease expected completion for early summer / fall of 2026. A total of 7,000sf of warehousing available that can be separated into two 3500sf units or a combined unit of 7,000sf. The consolidated option is available during the early construction phase. Each unit is planned to have a 14ft x 14ft bay door with the interior ceiling height 20ft on the walls and 24ft at the centre peak. The plans also call for a washroom, 464sf mezzanine, 200amp / 3 phase power. Customize your design by securing your unit now! Parking is estimated at 4-8 spots per unit. Call the listing agent for more information. Photo renderings are for marketing purposes only. (id:6769)

Blair Harper

eXp Realty (Kamloops)

Phone: (778) 220-7673



RE/MAX Kelowna
100-1553 Harvey Avenue
Kelowna, BC,
Canada