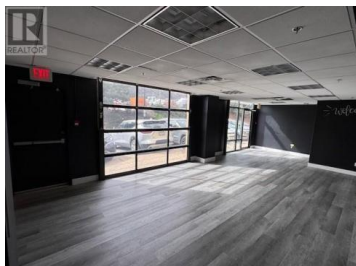
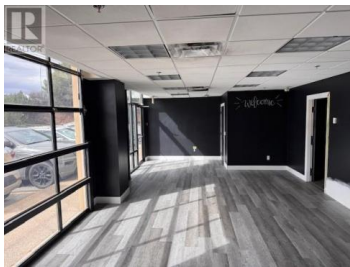
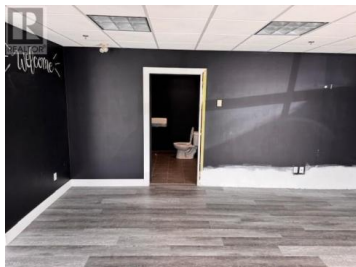


2476 Westlake Road 10B Kelowna British Columbia

West Kelowna Estates

\$24



FOR LEASE - Rare Industrial Strata Unit in Prime West Kelowna Location Take advantage of a rare opportunity to lease a remarkable 545 sq. ft. industrial strata unit located in the heart of West Kelowna's thriving commercial corridor. Situated at 2476 Westlake Road, this high-exposure unit offers excellent visibility and easy access, just 5 minutes from downtown Kelowna and steps from the core of West Kelowna's industrial and commercial activity. On-Site Amenities: Includes a private 2-piece bathroom Property Highlights: Size: 545 sq. ft. of versatile industrial space Zoning: I-1 (Light Industrial) - allows for a wide range of business uses, including: Commercial services Light manufacturing Warehousing and distribution Educational and training facilities Fitness centers and studios 1 x 10' x 10' overhead garage bay door 2 man doors for convenient customer and staff access On-Site Amenities: Includes a private 2-piece bathroom Parking and Access: Ample on-site parking and easy vehicle access for deliveries Whether you're launching a new venture or expanding an existing operation, this unit is perfectly suited for businesses seeking a professional, well-located industrial space with functional design and flexible zoning. (id:6769)

Steven Harvey

Business Finders Canada

Phone: (250) 808-2838

<http://www.businessfinderscanada.com/>



RE/MAX Kelowna
100-1553 Harvey Avenue
Kelowna, BC,
Canada

