

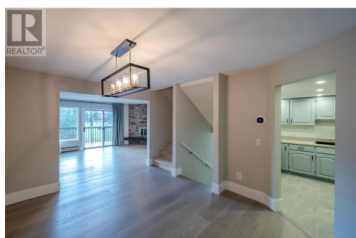
144 SUMAC RIDGE Drive 11 Summerland British Columbia

Summerland Rural

\$499,000



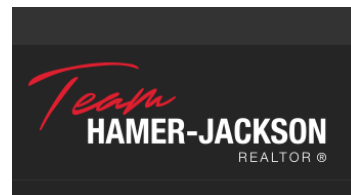
Experience the ultimate in golf course living at this spacious Fairway Five townhome, overlooking the lush greens of Sumac Ridge Golf Course. With over 2,100 sq. ft. spread across three levels, this expansive home offers 2 bedrooms plus a versatile den (which can easily serve as a 3rd bedroom) and 3 bathrooms. The kitchen boasts brand-new tile floors, while the living area is upgraded with luxury laminate for a modern, elegant touch. The lower level invites relaxation with a cozy family/rec room, complete with a real wood-burning fireplace. Step outside to enjoy two private entertainment decks, perfect for outdoor living. Additional highlights include a single-car garage, extra parking, and a secure storage room. This beautifully maintained and quiet complex offers the convenience of heat and hot water included in the strata fee, with no age restrictions, making it ideal for a variety of lifestyles. (id:6769)



Graeme Veitch

Royal LePage Parkside Rlty Sml

Phone: (250) 462-1757



RE/MAX Kelowna
100-1553 Harvey Avenue
Kelowna, BC,
Canada