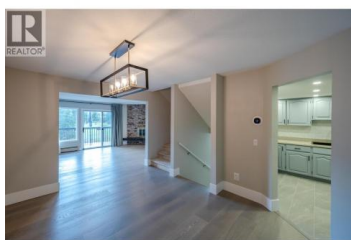


144 SUMAC RIDGE Drive 11 Summerland British Columbia

Summerland Rural

\$499,000



Golf course living at Fairway Five overlooking Sumac Ridge Golf Course. This spacious 2,100+ sq.ft. townhome offers 2 bedrooms plus a den (easily a 3rd bedroom) and 3 bathrooms across three levels. Updated kitchen with new tile flooring and luxury laminate in the main living area. The lower level features a cozy family/rec room with a wood-burning fireplace. Enjoy two private decks, a single-car garage, additional parking, and a secure storage room. The strata fee conveniently includes heat and hot water, helping offset monthly utility costs and providing predictable expenses. Well-maintained complex with no age restrictions. A great opportunity to enjoy space, views, and lifestyle in a desirable golf course community. (id:6769)



Graeme Veitch

Royal LePage Parkside Rlty Sml

Phone: (250) 462-1757



RE/MAX Kelowna
100-1553 Harvey Avenue
Kelowna, BC,
Canada