



15 West Pearce Street 11 Richmond Hill Beaver Creek Business Park Ontario

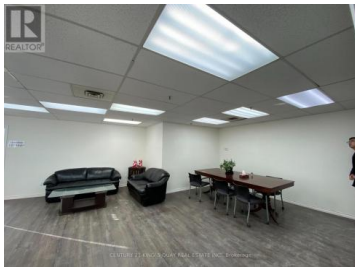
Beaver Creek Business Park

\$20

CENTURY 21 KING'S QUAY REAL ESTATE INC. Brokerage



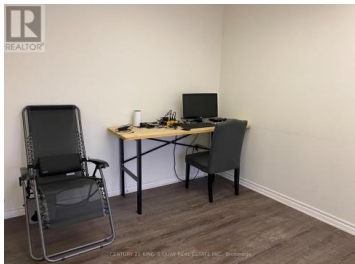
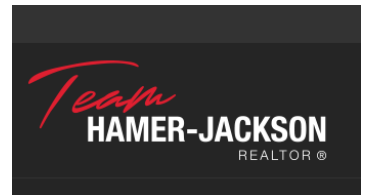
Rare find 6000'+ industrial unit in high demand Beaver Creek Business Area. The complex is well maintained & offers ample parking. This clean & well kept end unit offers excellent accessibility to major transportation routes via Highway 7, Highway 404 and Highway 407. Clean warehousing and light manufacturing uses. Only clean uses permitted. No recreation, food, school related uses permitted. 2 washrooms. It is a sub lease til 6/30/2029. Offer conditional upon Landlord approval. (id:6769)



EDDIE W. K. CHEUNG

CENTURY 21 KING'S QUAY REAL ESTATE INC.

Phone: (416) 930-8286



RE/MAX Kelowna
100-1553 Harvey Avenue
Kelowna, BC,
Canada