

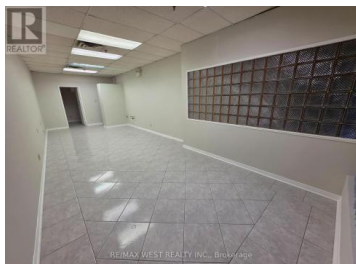
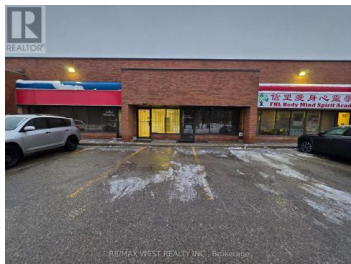


165 East Beaver Creek Road 11 Richmond Hill Beaver Creek Business Park Ontario

Beaver Creek Business Park

\$1,000

RE/MAX WEST REALTY INC., Brokerage



Step into opportunity in the heart of Richmond Hill. Tucked into a highly desirable, high-visibility commercial area, this turnkey commercial unit is the perfect place to bring your business vision to life—at an amazing lease price that's hard to find in today's market. As you enter, you're welcomed by a clean, modern space that's been thoughtfully laid out and ready for immediate use, saving you time and startup costs. Previously operating as a beauty salon, the unit offers existing plumbing, making it ideal for personal service businesses, medical or wellness uses, or any concept requiring water access. The flexibility doesn't stop there—multiple uses are permitted, including retail, service-related businesses, or professional office space, allowing you to adapt the space to your needs. At the back, you'll find the convenience of a private bathroom and kitchenette, adding comfort and functionality for staff and clients alike. Whether you're launching a new venture, expanding an existing brand, or relocating to a stronger market, this Richmond Hill location delivers visibility, versatility, and value. A rare opportunity to secure a ready-to-go commercial space in a prime area—just unlock the doors and start. (id:6769)

DAVID BURIEV

RE/MAX WEST REALTY INC.

Phone: (905) 773-8000

<https://www.theluxrealtor.ca/>



RE/MAX Kelowna
100-1553 Harvey Avenue
Kelowna, BC,
Canada

