



RE/MAX REALTOR®



## 52 West Beaver Creek Road 11 Richmond Hill Beaver Creek Business Park Ontario

Beaver Creek Business Park

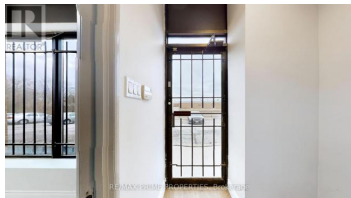
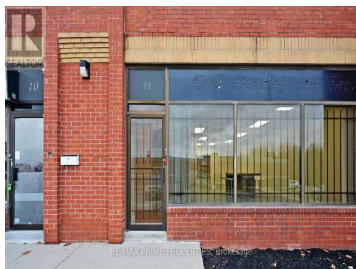
# \$1,550,000



RE/MAX PRIME PROPERTIES Brokerage



Beaver Creek Business Park - PRIME LOCATION!! Location Location Location!  
Over 2000 sqft of space (40% office & 60% industrial space) in the heart of Richmond Hill. One truck shipping door, parking, easy access to Highways 407, Hwy 7, Hwy 404. A perfect clean unit recently renovated to meet your business needs. This one will not last long! (id:6769)

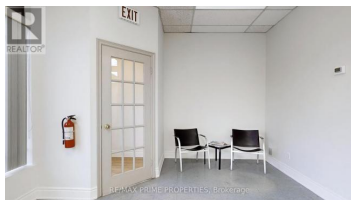
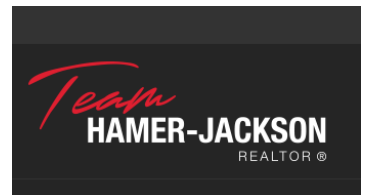


### JOHN SKENDERIS

RE/MAX PRIME PROPERTIES

Phone: (905) 554-5522

<http://www.johnskenderis.com/>



RE/MAX Kelowna  
100-1553 Harvey Avenue  
Kelowna, BC,  
Canada