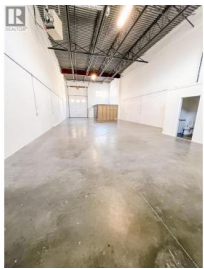




210 Lougheed Road 110 Kelowna British Columbia
 North Glenmore
\$18



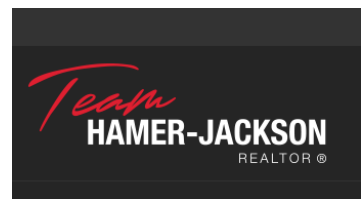
Concrete Industrial Strata Unit centrally located near Adams Road. 2,412sf main floor warehouse with a reception area and washroom. 12 x 14' grade level door with three phase 200amp power and four dedicated parking stalls. I-1 Business industrial zoning allows for many uses. (id:6769)



Stefani Lea

Royal LePage Kelowna

Phone: (250) 870-0730



RE/MAX Kelowna
 100-1553 Harvey Avenue
 Kelowna, BC,
 Canada