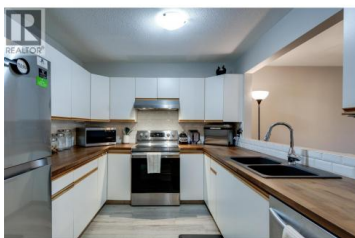


400 Sutton Crescent 110 Kelowna British Columbia

Glenmore

\$479,900



Discover modern urban living in the heart of Glenmore at the highly coveted Orchardbrook Village. Perfectly positioned with restaurants, bars, groceries, boutique shops, trendy coffee spots, and public transit right outside your door—plus quick access to both downtown and the airport—this is convenience at its finest. This oversized condo offers exceptional space and comfort, starting with a large welcoming entryway that opens into an airy, open-concept kitchen and dining area. The kitchen features butcher block counters, stainless steel appliances, and a stylish serving bar designed for effortless entertaining. The well-designed floor plan includes two generously sized bedrooms, highlighted by a sprawling primary suite complete with a massive walk-in closet and private ensuite. The second bedroom is equally impressive and is paired with its own full bathroom—ideal for guests or flexible living arrangements. A rare bonus for condo living, this unit also boasts a full separate laundry room, adding convenience and storage you will not find elsewhere. Step outside to the oversized year-round balcony, an outdoor extension of your living space perfect for morning coffee, evening relaxation, or hosting friends. Whether you're a first-time buyer seeking a vibrant lifestyle or a downsizer looking for ease and comfort, Orchardbrook Village delivers exceptional value in one of Glen...



RE/MAX Kelowna
100-1553 Harvey Avenue
Kelowna, BC,
Canada

Leanne McCulloch

Royal LePage Kelowna

Phone: (250) 300-9445

<https://leannemcculloch.royallepage.ca/>

ca/

