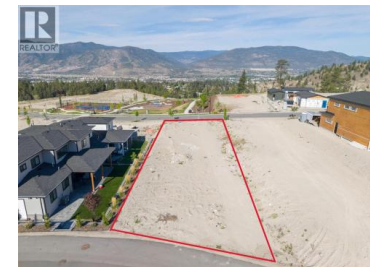


110 Deer Place Penticton British Columbia

Columbia/Duncan

\$379,999



Nestled in the sought-after community of The Ridge, this exceptional 0.22-acre residential building lot offers the perfect opportunity in one of the area's most desirable settings. With the flexible R4-S zoning allowing small-scale multi-unit residential combined with road and alley access, this lot would be suitable for a large single family home plus a carriage home, or a duplex without any shared walls, up to 4 units allowed with the zoning. Situated on a quiet street directly across from the park featuring tennis and pickleball courts, this large, flat lot captures sweeping panoramic city and mountain views that are truly breathtaking. Enjoy the convenience of being just minutes from schools, shopping, and recreation, while endless nearby biking and hiking trails make it easy to embrace an active outdoor lifestyle. With stunning vistas, a premium location, and endless potential, this is an offering you won't want to miss. Contact the listing agent for details! (id:6769)

Wes Stewart

Royal LePage Locations West

Phone: (250) 486-2794



RE/MAX Kelowna
100-1553 Harvey Avenue
Kelowna, BC,
Canada