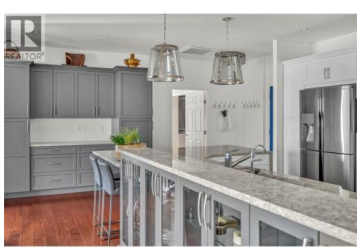
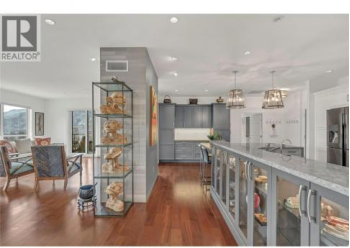




3388 Skaha Lake Road 1103 Penticton British Columbia

Main South

\$1,075,000



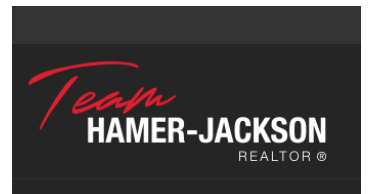
Absolutely one of a kind, panoramic lake view, sub penthouse at the South end of Penticton on the 11th floor! This stunning 1700sqft unit is totally custom & upgraded throughout with no detail missed. Situated on the whole South side of the building & wrapping to the East & West sides also, with expansive views across Skaha Lake this modern condo is spectacular, & just a 3-minute walk to Skaha Lake. The floorplan features 2 bedrooms plus a den, spacious open rooms & design with over 664sqft of deck space to enjoy over 4 decks! The stunning high end kitchen features waterfall edge quartz counters, 7 high end appliances, custom organizers & tons of cabinetry. The hardwood floors run throughout the unit, & customizations continue with all built in closet organizers, valor fireplace, wheelchair accessible door frames, recessed lighting, custom cabinetry & more. The unit comes with a secure parkade parking spot & has a large storage locker on the same floor as the suite. (id:6769)

John Green

Chamberlain Property Group Inc.

Phone: (250) 486-5353

<https://teamgreen.ca/>



RE/MAX Kelowna
100-1553 Harvey Avenue
Kelowna, BC,
Canada