



Edmonton Alberta

Rutherford (Edmonton)

\$229,800



Rare two bedroom plus study (or third bedroom if the need is there) unit in Rutherford Village. Very spacious unit with large open living, dining and kitchen area. Two extra large bedrooms will easily accommodate King sized bedroom suites. This main floor unit has a large patio with gas hook up and is south east facing. There is one underground heated stall with locked storage cage and one outside stall directly in front of the unit. Close to all amenities such as shopping recreation centre, Anthony Henday freeway system and Hwy 2 south to Edmonton International Airport (id:6769)

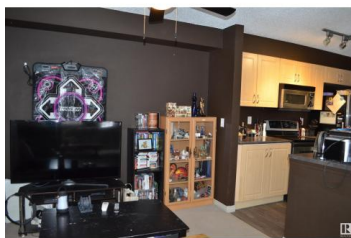
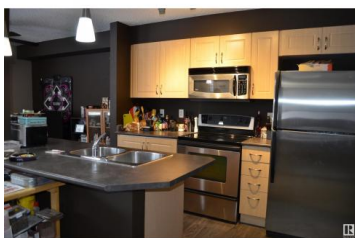


Denis G. Rowley

RE/MAX Elite

Phone: (780) 908-7000

<http://www.denisrowley.com/>



RE/MAX Kelowna
100-1553 Harvey Avenue
Kelowna, BC,
Canada