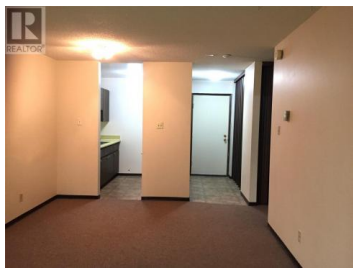




1560 Summit Drive 111 Kamloops British Columbia

Sahali

\$249,900



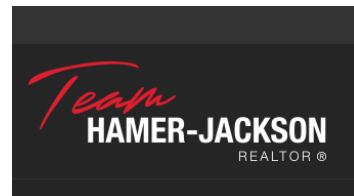
Investor Alert! Welcome to Gordonhorn Gardens -- a fantastic opportunity in the heart of Sahali! This well-maintained 1-bedroom unit is ideally located near schools, transit, TRU, parks, and shopping, making it a very desirable rental spot. The complex has seen numerous upgrades over the years and is professionally managed for peace of mind. Convenient in suite storage room and patio door access to your very own concrete patio area. A solid investment with a reliable tenant already in place on lease until October 31, 2025. Don't miss out on this turnkey opportunity! (id:6769)

Micheline Stephenson

Royal LePage Westwin Realty

Phone: (250) 571-2678

<http://kamloopsproperties.ca/>



RE/MAX Kelowna
100-1553 Harvey Avenue
Kelowna, BC,
Canada