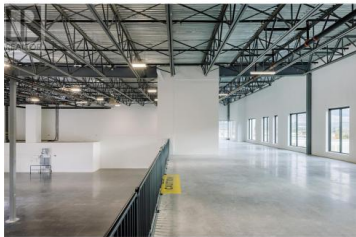
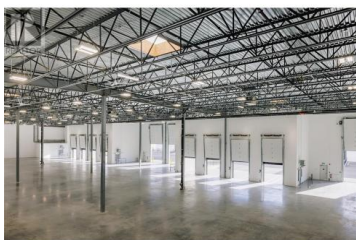




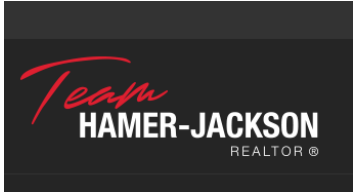
1870 Pier Mac Way 112 Kelowna British Columbia
 University District
\$3,930,930



Welcome to Stratosphere -- the next generation of industrial real estate in the Okanagan Valley offering a rare opportunity to own industrial space developed by Beedie. Stratosphere offers flexible ownership opportunities with transaction structures tailored to meet your needs. Developed by Western Canada's largest industrial developer, Stratosphere marks Kelowna's first large format premium industrial strata development with grade and dock loading, consisting of 13 thoughtfully crafted units across two buildings. Industrial units range in size from 7,618 to 17,273 SF, with a combined square footage to accommodate up to 74,942 SF. Each state-of-the-art unit is equipped with best-in-class specifications designed to maximize warehouse efficiencies and business operations. (id:6769)



Steve Laursen
 Royal LePage Kelowna
 Phone: (250) 808-8101
<http://www.stevelaursen.com/>



RE/MAX Kelowna
 100-1553 Harvey Avenue
 Kelowna, BC,
 Canada