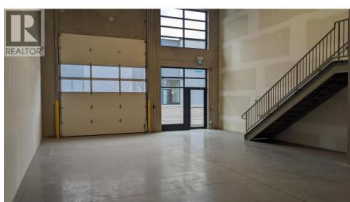


2648 Kyle Road 112 West Kelowna British Columbia

West Kelowna Estates

\$17



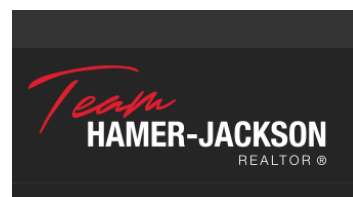
Opportunity to lease 1,710 SF of I1 zoned industrial space on Kyle Rd in West Kelowna. 1,260 SF of ground floor and 450 SF of mezzanine. The building, built in 2020, provides quick access to Highway 97 and is ready to accommodate a wide range of tenancies. The unit provides an open layout with a mezzanine, 24' ceiling height, 14' overhead door, loading bay, washroom and onsite parking. (id:6769)



Sol Benson

Venture Realty Corp.

Phone: (250) 317-1077



RE/MAX Kelowna
100-1553 Harvey Avenue
Kelowna, BC,
Canada