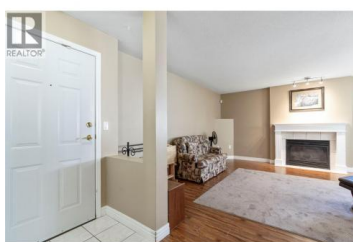


## 650 3 Street 112 Salmon Arm British Columbia

SW Salmon Arm

**\$354,900**



SPACIOUS END UNIT! .....Bright and airy, this 2-bedroom, 2-bath suite in Cambridge Court offers a well-designed layout with extra windows that fill the home with natural light. Nicely finished with quality flooring throughout, the functional kitchen flows directly to a private in-ground patio—ideal for morning coffee or outdoor dining. The living room features a gas fireplace and opens into a generous dining area. The primary bedroom includes a walk-in closet and private ensuite, while the second bedroom, full bath, and in-suite laundry complete the space. Covered parking (#45) and a storage locker are included. All this within easy walking distance to shops, services, and amenities. (id:6769)

### Rochelle Dale

RE/MAX Shuswap Realty

Phone: (250) 804-9327

<http://www.rochelldale.com/>



RE/MAX Kelowna  
100-1553 Harvey Avenue  
Kelowna, BC,  
Canada