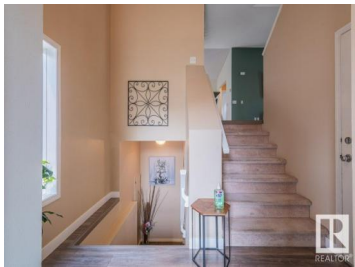
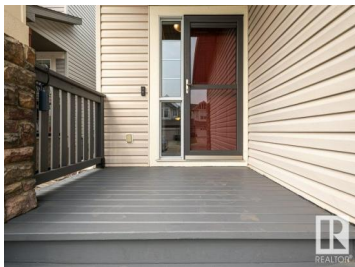




Sherwood Park Alberta

Lakeland Ridge

\$555,000



Perfectly located for a growing family, this beautifully maintained bi-level offers 4 bedrooms and 3 full bathrooms, just a 5-minute walk to schools and parks. Inside, the spacious great room welcomes you with vaulted ceilings and a cozy corner gas fireplace—ideal for relaxing evenings or lively family gatherings. The kitchen offers an abundance of cabinets, a large island with granite counters, and plenty of space for meal prep and connection. The primary bedroom features a walk-in closet and private ensuite for added comfort. Downstairs, enjoy a finished basement with a refreshment bar in the games room—large enough for a pool table. A warm family room with a wood-burning fireplace adds charm, along with a tucked-away corner desk space for remote work or homework. Outside, the fenced backyard is ready for kids and pets to play. This is a home that's been loved, cared for, and designed with lifestyle in mind. A must-see for families looking to put down roots in Sherwood Park. (id:6769)

Erick S. Yip

RE/MAX Elite

Phone: (780) 619-6197

<https://erickyip.com/>



RE/MAX Kelowna
100-1553 Harvey Avenue
Kelowna, BC,
Canada