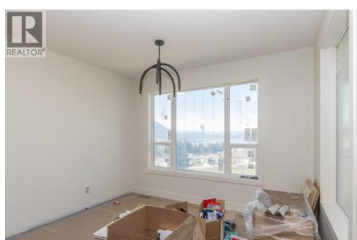




1121 16 Avenue Salmon Arm British Columbia

SE Salmon Arm

\$1,249,000



This amazing new home with a stunning lake view and daylight basement is sure to impress. Nestled in Sunset Ridge subdivision, this brand-new rancher offers an exceptional living experience with breathtaking lake view. With 3,150 finished square feet of thoughtfully designed space, 5 bedrooms plus den, 4 bathrooms and spacious family room, this home provides the perfect blend of comfort and style. The open-concept layout features spacious living areas, allowing for seamless entertaining and everyday relaxation. Large windows throughout the home flood the space with natural light, highlighting the stunning lake view. The home also boasts a full daylight basement with in floor heat, family room, 3 bedrooms and 2 bathrooms. Set on a spacious .24-acre lot, this property gives you ample outdoor space to enjoy a pool, or a shop or to sit and enjoy this amazing setting. The location in Sunset Ridge is ideal, offering both tranquility and easy access to local amenities, outdoor recreation, and schools. Whether you are looking to downsize, or upsize, this home is a must-see. Don't miss the chance to own this beautiful property with amazing views and endless possibilities. Contact us today to schedule a tour and experience everything this home has to offer! (id:6769)

Nathan Grieve

Homelife Salmon Arm Realty.Com

Phone: (250) 804-6302

<https://jgrieverestate.com/>



RE/MAX Kelowna
 100-1553 Harvey Avenue
 Kelowna, BC,
 Canada

