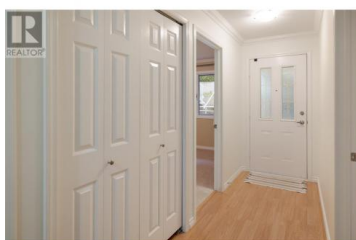
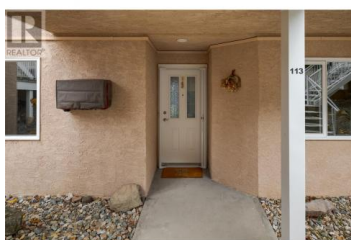




4630 Ponderosa Drive 113 Peachland British Columbia

Peachland

\$479,900



Welcome to #113 4630 Ponderosa Drive! Located at Chateaux on the Ridge - a boutique townhouse complex in Peachland - this beautiful, well-appointed, 2-bedroom, 2-bathroom townhouse includes 1169 sq. Ft of living space, with a 192 sq. Ft outdoor deck. This unit features a modern design with new paint, gas fireplace and laminate floors with radiant heat. The kitchen is equipped with white appliances, white cabinets, laminate countertops, and opens onto the dining room/living room with direct access to the private outdoor deck. Down the hall is the primary bedroom with 3-pc en-suite and walk-in closet. The unit is complete with secondary bedroom, 4-pc bathroom and a full-size laundry room with lots of storage. Perched along the Western Bench at the base of Pincushion Mountain, Chateaux on the Ridge offers stunning panoramic views of the surrounding mountains, Okanagan Lake, and The Pines at Ponderosa - a marquee residential development and golf experience, which will include a 9-hole golf course designed by the award winning, Les Furber (coming Fall 2026). Chateaux on the Ridge is a self-managed strata with a low strata fee that includes heat, water and gas. Rentals are allowed, with restrictions (min. 30 days) and pets are also allowed, with restrictions (strata approval required; dogs will only be allowed to a maximum height of fourteen [14] inches or thirty-five centimetres ...



RE/MAX Kelowna
100-1553 Harvey Avenue
Kelowna, BC,
Canada

Kyle B. Janzen

Oakwyn Realty Ltd.

Phone: (778) 215-2784

<http://www.kylebjanzen.com/>

