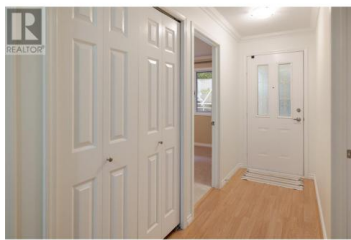




## 4630 Ponderosa Drive 113 Peachland British Columbia

Peachland

**\$469,900**



Welcome to #113 4630 Ponderosa Drive! Located at Chateaux on the Ridge - a boutique townhouse complex in Peachland - this beautiful, well-appointed, 2-bedroom, 2-bathroom townhouse includes 1169 sq. Ft of living space, with a 192 sq. Ft outdoor deck. This unit features a modern design with new paint, gas fireplace and laminate floors with radiant heat. The kitchen is equipped with white appliances, white cabinets, laminate countertops, and opens onto the dining room/living room with direct access to the private outdoor deck. Down the hall is the primary bedroom with 3-pc en-suite and walk-in closet. The unit is complete with secondary bedroom, 4-pc bathroom and a full-size laundry room with lots of storage. Perched along the Western Bench at the base of Pincushion Mountain, Chateaux on the Ridge offers stunning panoramic views of the surrounding mountains and Okanagan Lake. Chateaux on the Ridge is a self-managed strata with a low strata fee that includes heat, water and gas. Rentals are allowed, with restrictions (min. 30 days) and pets are also allowed, with restrictions (strata approval required; dogs will only be allowed to a maximum height of fourteen [14] inches or thirty-five centimetres when measured at the shoulders when fully grown). (id:6769)

**Kyle B. Janzen**

Oakwyn Realty Okanagan

Phone: (778) 215-2784

<http://www.kylebjanzen.com/>



**RE/MAX Kelowna**  
100-1553 Harvey Avenue  
Kelowna, BC,  
Canada

