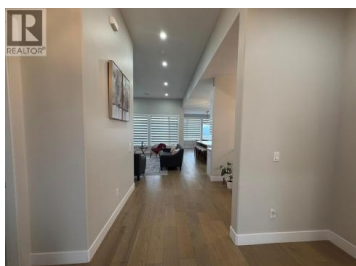
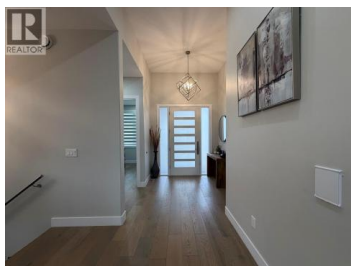


1135 Loseth Drive Kelowna British Columbia

Black Mountain

\$1,349,000



Welcome to this exceptional 3,500+ sq. ft. walk-out rancher, perfectly positioned in the prestigious Black Mountain community. Designed for modern families and savvy buyers alike, this home offers 4 spacious bedrooms, 4 full bathrooms, a den, along with a self-contained 1-bedroom legal suite with private entrance—ideal for rental income, extended family, or guests. Step inside to experience bright, open-concept living enhanced by high-end finishes and thoughtful upgrades throughout. The home features hardwood and vinyl plank flooring in the main living areas, quartz countertops, custom cabinetry, a walk-in pantry, contemporary fixtures, and a built-in vacuum system. The instant hot water tank and all included appliances add everyday convenience. Entertain with ease on the covered deck, where you can relax and take in beautiful valley views, or enjoy the comfort of ceiling speakers and a security camera system for both ambiance and peace of mind. A double garage provides ample space for vehicles and storage. This one-of-a-kind residence delivers the perfect balance of luxury, functionality, and income potential, all within a high-end neighborhood close to schools, shopping, golf, and outdoor recreation. A rare opportunity to own a truly complete home in one of Black Mountain's most desirable locations. (id:6769)

JB Bansoota

RE/MAX Wine Capital Realty

Phone: (250) 486-6339

<http://www.wesellpenticton.com/>



RE/MAX Kelowna
100-1553 Harvey Avenue
Kelowna, BC,
Canada

