

2436 Skaha Lake Road 114 Penticton British Columbia

Main South

\$15



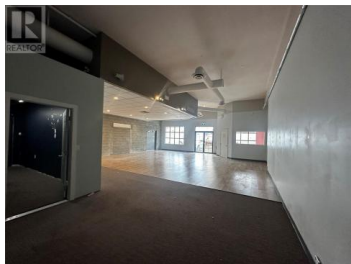
Unit 114 at Royal Plaza offers 2,279 sq. ft. of open, functional space ideal for a variety of retail or service-based uses. Located along Skaha Lake Road—a high-traffic arterial in Penticton's Main South—the unit benefits from excellent visibility, prominent signage opportunities, and convenient access for both vehicles and pedestrians. Royal Plaza is a well-established centre with a diverse tenant mix and ample on-site common parking. Available now. (id:6769)



Meghan Cortese (O'Mara)

Royal LePage Kelowna

Phone: (250) 862-7038



RE/MAX Kelowna
100-1553 Harvey Avenue
Kelowna, BC,
Canada