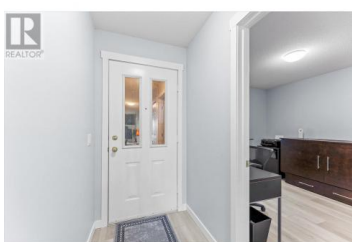


## 4630 Ponderosa Drive 114 Peachland British Columbia

Peachland

**\$519,900**



Unit 114 at Chateau on the Ridge sits at the top of Ponderosa Drive in Peachland, has breathtaking lake views and is only minutes to Beach Ave! On the market for the first time since it was built, this updated 2-bedroom, 2-bathroom one-level townhome is waiting for you to call it home! The most recent renovations were done in 2024 and include new luxury vinyl plank flooring with in-floor radiant heat throughout the unit, white shaker-style kitchen cabinets, new stainless appliances and new laminate countertops. Plus the entire unit has been freshly painted! The kitchen and living room have windows and sliding doors opening onto your private balcony that overlooks the lake and fills the unit with tons of natural light. The kitchen offers ample storage and counter space with an eat-in breakfast nook. The primary suite features a 3-piece bathroom and walk-in-closet, with the second bedroom or office and 4-piece bathroom just across the hallway. The laundry room includes a new washer/dryer, too. Outside on your private balcony you can see the lake through the pine trees; the perfect spot for morning tea or coffee or evening relaxation while watching nature unfold in front of you! Situated in a quiet, well-maintained community, this home is just minutes from Peachland's waterfront, wineries, Pincushion hiking trails and local amenities. Outdoor storage and parking for 1 car is in...



**RE/MAX Kelowna**  
100-1553 Harvey Avenue  
Kelowna, BC,  
Canada

**Taryn O'Donohue**

Royal LePage Kelowna

Phone: (250) 300-1311

