



## 100 Enterprise Way 115 Oliver British Columbia

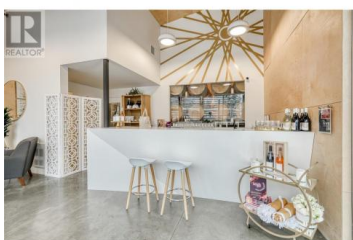
Oliver Rural

**\$495,000**



Discover the extraordinary opportunity to acquire JoiRyde Winery, a flourishing ready-to-go winery nestled within Oliver's bustling District Wine Village.

Immerse yourself in the well-established brand's spirit, celebrating spontaneity and the joys of life's adventures. This winery encompasses top-tier equipment, an extensive inventory, and an enviable location at the heart of Okanagan Wine Country. Step into the lifestyle of JoiRyde. Celebrated for its exceptional wines that perfectly complement the diverse dining and shopping experiences offered by nearby vendors. With a backdrop of picturesque mountains, proximity to lakes, Area 27 Raceway Park, and an abundance of outdoor recreational activities, coupled with a multitude of events and entertainment, this investment guarantees great enjoyment for both locals and tourists. Seize the opportunity as an entry point into the vibrant and rewarding winery business - a lifestyle choice not to be missed!" (id:6769)



**Paul Grewal**

Chamberlain Property Group

Phone: (250) 809-7014



**RE/MAX Kelowna**  
100-1553 Harvey Avenue  
Kelowna, BC,  
Canada