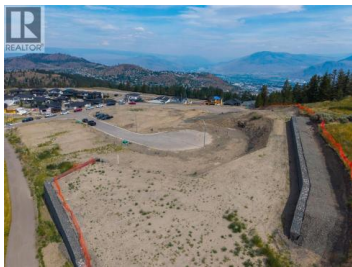




1600 Aberdeen Drive 115 Kamloops British Columbia

Aberdeen

\$309,000



This is a pre-sale opportunity to purchase a 4,757 sqft bare-land strata lot, ideal for a custom home build in the West Highlands of Aberdeen - with close proximity to walking trails, Pacific Way Elementary School and city parks. Lot 15 (Unit 115) features an ideal location close to the entrance of the cul de sac, as well as the potential for incredible views from a 2nd storey elevation - with a mix of mature foliage, rolling landscapes and mountains in the distance.

Aberdeen Hills is a brand new 29 unit bareland strata subdivision with a mix of custom homes, basement entry and rancher homes with walk out basements. Strata is professionally managed by CML Properties Ltd. No rental restrictions. No pet restrictions (with the exception of City Bylaw). GST applies. (id:6769)

Brendan Shaw

Brendan Shaw Real Estate Ltd.

Phone: (250) 319-4737

<http://www.bsre.ca/>



RE/MAX Kelowna
 100-1553 Harvey Avenue
 Kelowna, BC,
 Canada