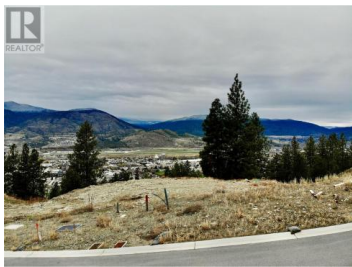




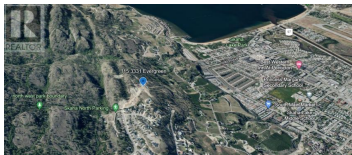
3331 EVERGREEN Drive 115 Penticton British Columbia

Wiltse/Valleyview

\$450,000



One of Penticton's premier lake view lots! This 0.44-acre property offers panoramic views of both Skaha Lake and the city. Designed for a rancher with a walk-out basement, there's plenty of space for a pool and a 3-car garage. Two different floor plans are already available, or the builder can builder can tailor to your needs. The lot requires entering into a new home construction contract with the exclusive builder. (id:6769)

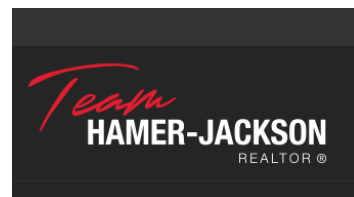


Luke Cook

Sotheby's International Realty Canada

Phone: (250) 863-5539

<http://www.lukecook.ca/>



RE/MAX Kelowna
100-1553 Harvey Avenue
Kelowna, BC,
Canada