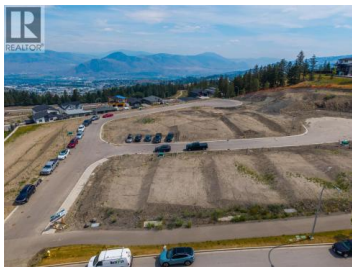


1600 Aberdeen Drive 116 Kamloops British Columbia

Aberdeen

\$299,000



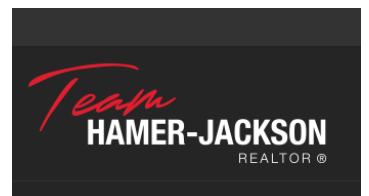
This is a pre-sale opportunity to purchase a 4,295 sqft bare-land strata lot, ideal for a basement entry or custom build in the West Highlands of Aberdeen - with close proximity to walking trails, Pacific Way Elementary School and city parks. Lot 16 (Unit 116) features potential views from 2nd floor elevations, with a mix of mature foliage, rolling landscapes and mountains in the distance. Aberdeen Hills is a brand new 29 unit bareland strata subdivision with a mix of custom homes, basement entry and rancher homes with walk out basements. Strata is professionally managed by CML Properties Ltd. No rental restrictions. No pet restrictions (with the exception of City Bylaw). GST applies. (id:6769)

Brendan Shaw

Brendan Shaw Real Estate Ltd.

Phone: (250) 319-4737

<http://www.bsre.ca/>



RE/MAX Kelowna
100-1553 Harvey Avenue
Kelowna, BC,
Canada