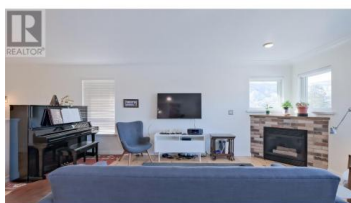
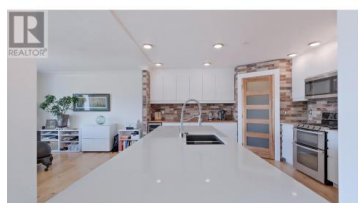


## 3948 FINNERTY Road 116 Penticton British Columbia

Wiltse/Valleyview

**\$769,000**



Breathtaking Skaha Lake views... Luxuriously renovated end-unit townhome! Every detail has been thoughtfully designed, from the newer chef's kitchen—featuring a spacious island, gleaming quartz countertops, a built-in microwave, a gas range, and a wine fridge—to the open-concept living area with a stunning gas fireplace and modern surround. Step onto the deck and soak in the breathtaking vistas, turning everyday moments into a serene retreat. This stunning home offers three bedrooms and three bathrooms, including a spacious primary suite with ample room for a king-sized bed, a cozy sitting area, a walk-in closet, and a beautifully updated 3-piece ensuite. Additional highlights include an attached double garage, eight new windows, two new patio doors, LED lighting and updated plumbing with Poly-B replaced by PEX for peace of mind. Very well run strata with large contingency reserve fund and two pets are welcome with some restrictions. Don't miss this rare opportunity to own a meticulously upgraded townhome with unbeatable lake views! (id:6769)

### Steve Thompson

Chamberlain Property Group

Phone: (250) 487-7000

<http://www.teamthompson.com/>



RE/MAX Kelowna  
100-1553 Harvey Avenue  
Kelowna, BC,  
Canada