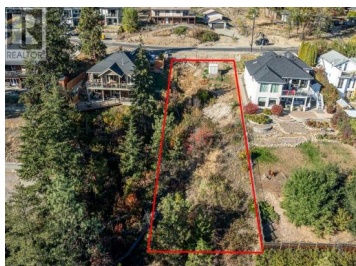




11635 Pretty Road Lake Country British Columbia

Lake Country South West

\$479,000



Rare opportunity to own a registered building lot with stunning lake views, just a few blocks from the water. Watch your boat docked at Turtle Bay Marina from your backyard. Zoned for a single family home or small-scale multi unit housing. All services - water, gas and sewer are available at the lot line. Ideal for building our dream home or a strategic investment property. Conveniently located within walking distance to Starbucks and nearby amenities and only 15 minutes to the airport. 2 Separate sets of building designs ready go. Buyers to conduct their own due diligence regarding building permits, zoning, restrictions, permitted uses and future development potential. Measurements are approximate. (id:6769)

Loretta Nicholson

Macdonald Realty

Phone: (250) 212-8182



RE/MAX Kelowna
100-1553 Harvey Avenue
Kelowna, BC,
Canada