



## 1166 APEX MOUNTAIN Road Penticton British Columbia

Penticton Apex

**\$749,000**



Welcome to 1166 Apex Mountain Road, a charming mountain retreat nestled on a spacious 0.34-acre lot. Thoughtfully upgraded with major updates to the plumbing, electrical systems, and more, this home offers modern comfort with an ideal setting for making memories that will last a lifetime. Blending contemporary upgrades with the natural beauty of its surroundings, this Apex property is a true mountain gem. (id:6769)

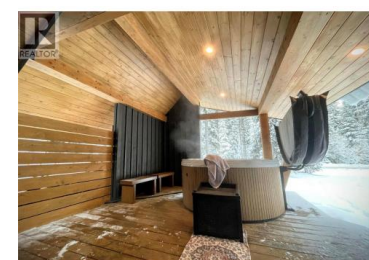


### Peter Berzins

Summerland Realty Ltd.

Phone: (250) 212-9212

<https://openhousebc.com/>



RE/MAX Kelowna  
100-1553 Harvey Avenue  
Kelowna, BC,  
Canada