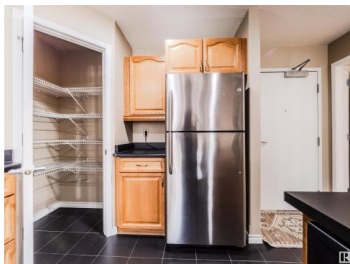




Edmonton Alberta

Avonmore

\$312,000



FANTASTIC, ADULT LIVING BUILDING! SPECTACULAR RAVINE LOCATION! IMMACULATE EXECUTIVE CONDO! The Conservatory is one of the cleanest and best-maintained buildings you will find. Located adjacent to Mill Creek Ravine surrounded by scenic walking trails & park, close to downtown, U of A & future LRT station. This large 1 bdrm + den unit boasts a bright, open & functional floor plan with large living spaces. Features include the spacious kitchen with loads of cabinets, powered island, corner pantry & S/S appliances, spacious master with his and her closets & 4-pce ensuite, in-suite laundry & storage, large south-facing patio, A/C & NEW PAINT AND CARPET. The underground parking stall is near the elevator & there is a storage cage in a separate locked room. This unit is very close to the elevator and a ground-level exit steps from the front door providing an additional element of convenience. Outstanding amenities, including a roof-top patio, guest suite, exercise room and beautiful lobby. (id:6769)

Samantha Stachniak

RE/MAX Elite

Phone: (780) 221-7205



RE/MAX Kelowna
100-1553 Harvey Avenue
Kelowna, BC,
Canada