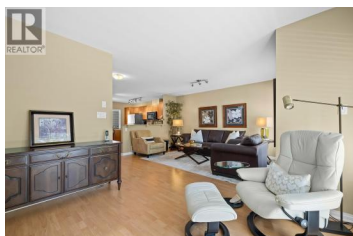
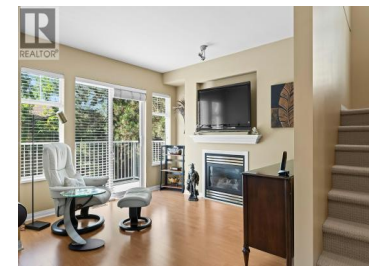




## 1853 Parkview Crescent 12 Kelowna British Columbia

Springfield/Spall

# \$677,700



Nestled in the heart of Kelowna's sought-after Springfield/Spall neighbourhood, this bright and inviting 3-bedroom, 2-bathroom townhome in the Solano complex offers the perfect blend of comfort, style, and convenience. Spread across three levels, the open-concept main floor is designed for modern living, featuring large windows that flood the space with natural light, a cozy gas fireplace, and a well-appointed kitchen complete with stainless steel appliances and sleek countertops. A private deck off the main level is ideal for morning coffee or summer evenings soaking up the Okanagan sunshine. Upstairs, you'll find three generously sized bedrooms, including a primary suite with 3 piece ensuite bathroom and ample closet space – your own private retreat at the end of the day. A second full bathroom serves the remaining bedrooms with ease. The lower level offers a practical entryway leading to an attached tandem garage with extra storage, plus a fully fenced private yard – perfect for kids, pets, or simply unwinding outdoors. Located halfway between downtown Kelowna and Orchard Park Mall, this centrally positioned home puts shopping, dining, medical services, parks, and transit all within easy reach. Whether you're a first-time buyer, a growing family, or someone looking to downsize without compromise, this Solano townhome checks every box! (id:6769)



**RE/MAX Kelowna**  
 100-1553 Harvey Avenue  
 Kelowna, BC,  
 Canada

**Braden Koop**

RE/MAX Kelowna

Phone: (250) 801-8725

<http://braden@koopshomes.ca/>

