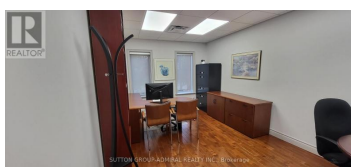
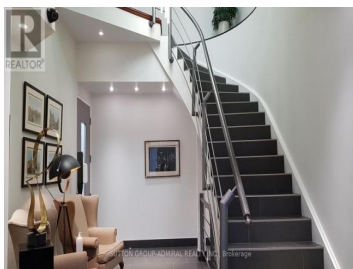




## 30 Wertheim Court 12-201 Richmond Hill Beaver Creek Business Park Ontario

Beaver Creek Business Park

**\$995**



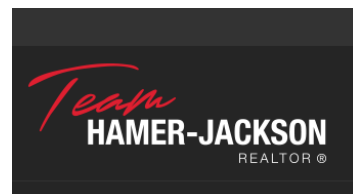
\* Fabulous Second Floor Executive Office Suite \* Beautiful Office Finishes \* Fully Furnished Suite \* Turnkey Ready to Occupy Immediately \* Located In Prime Beaver Creek Business Park Location \* Ample Free Surface Parking \* Shared Kitchenette / Common Washroom / Security System \* Suitable For Professionals / Lawyers / Consultants / Engineers / Small Businesses, Etc. \* Can be combined with Other Suite (# 204 & #206) \* \*\*\*\* EXTRAS \*\*\*\* \* Rent Is Totally Gross - Includes Taxes, Maintenance, Building Insurance, Heat, Hydro, Water, A/C, Janitorial \* Exterior Signage Available (At Tenant's Cost) \* Smoke Free Environment \* Tenant To Obtain Own Office Insurance Package \* (id:6769)

### MARVIN NEWMAN

SUTTON GROUP-ADMIRAL REALTY INC.

Phone: (647) 891-3336

<http://www.marvinnewman.ca/>





**RE/MAX Kelowna**  
100-1553 Harvey Avenue  
Kelowna, BC,  
Canada