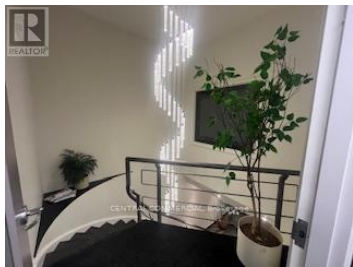
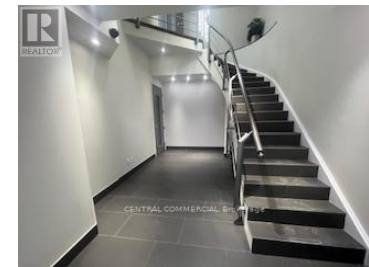




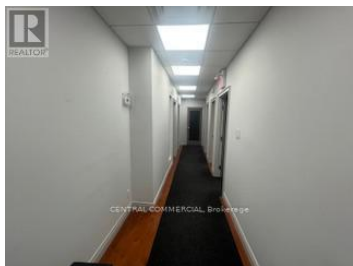
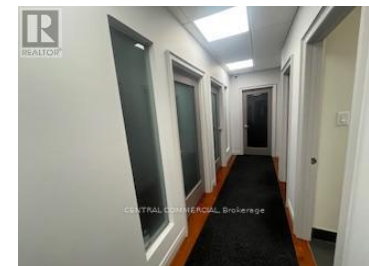
30 Wertheim Court 12-204 Richmond Hill Beaver Creek Business Park Ontario

Beaver Creek Business Park

\$850



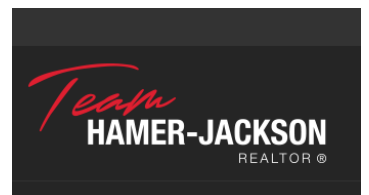
Second Floor Executive 196 SF Office Suite Fully Furnished Suite Ready to Occupy Immediately Located In Prime Beaver Creek Business Park Ample Free Surface Parking Shared Kitchenette / Common Washroom / Security System Suitable For Professionals / Lawyers / Consultants / Engineers / Small Businesses, Etc. Can be combined with other suites (1-4 offices available) Rent Is Totally Gross - Includes TMI, Heat, Hydro, Water, A/C (id:6769)



MASOUD ARJMANDFAR

CENTRAL COMMERCIAL

Phone: (416) 500-8777



RE/MAX Kelowna
100-1553 Harvey Avenue
Kelowna, BC,
Canada