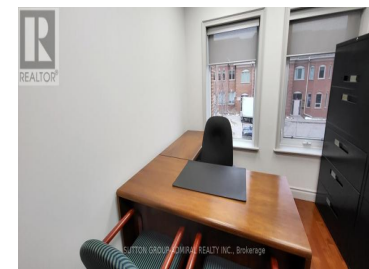




## 30 Wertheim Court 12-206 Richmond Hill Beaver Creek Business Park Ontario

Beaver Creek Business Park

**\$795**



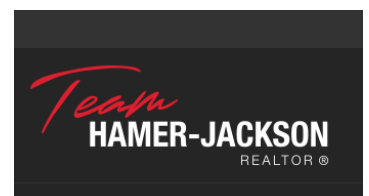
\*\*\* Fabulous second floor executive office suite \*\*\* beautiful office finishes \*\*\* gleaming hardwood floor \*\*\* located in prime beaver creek business park location \*\*\* ample free surface parking \*\*\* shared kitchenette / common washroom / security system \*\*\* suitable for professionals / lawyers / consultants / engineers / small businesses, etc. \*\*\* \*\*\*\*\* EXTRAS \*\*\*\*\* \*\* Rent Is Totally Gross - Includes Taxes, Maintenance, Building Insurance, Heat, Hydro, Water, A/C, Janitorial \*\* Exterior Signage Available (At Tenant's Cost) \*\* Smoke Free Environment \*\* Tenant To Obtain Own Office Insurance Package \*\* (id:6769)

### MARVIN NEWMAN

SUTTON GROUP-ADMIRAL REALTY INC.

Phone: (647) 891-3336

<http://www.marvinnewman.ca/>



RE/MAX Kelowna  
100-1553 Harvey Avenue  
Kelowna, BC,  
Canada