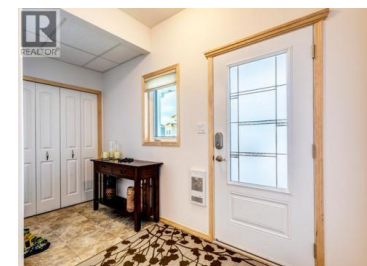




Whitehorse Yukon

\$868,800

SIMILAR BUILD
WYVERN LOTS & HOUSES ARE LARGER



Gorgeous builds by Whitewater Homes Inc.! Each situated on a 7,201 sqft or 6,533 sqft Lot with a laneway access, an attached/heated garage, large double concrete driveway with room for your RV's. A highly desired 2-storey family home with approximately 2,620 sqft of living space. Magnificent hardwood floors, hardwood cabinetry, quality finishings throughout, 9ft ceilings on the main floor and custom blinds. 4 bedrooms, a den, 2.5 baths (incl's master 5pc ensuite), 2 living rooms, oversized kitchen with pantry, large kitchen island, and a bright dining area which leads to a North/West facing deck. A 'Super Green' status build with R40 walls & R80 roof, quad pane windows, electric heating, LED lighting & an HRV. Fabulous 3-Year appliance warranty package. Fence is an optional upgrade +\$20K-\$25K. Located close to walking trails, the downtown core, CGC Center, parks and transit. PICTURES & VIDEO OF A SIMILAR BUILD/QUICK STR. LARGER HOUSE & LOT; LIGHT FIXTURES WILL VARY/NO CEILING FANS. (id:6769)

Tamara Cromarty

RE/MAX ACTION REALTY

Phone: (867) 334-9476



RE/MAX Kelowna
100-1553 Harvey Avenue
Kelowna, BC,
Canada