

3477 Lakeshore Road 120 Kelowna British Columbia

Lower Mission

\$35



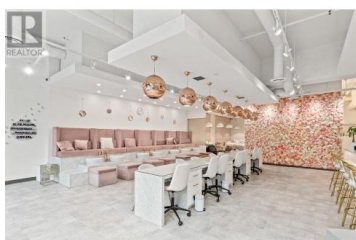
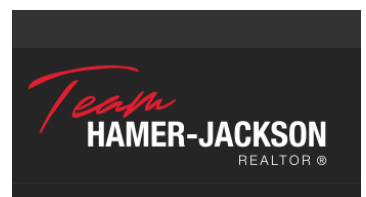
Lease 2,374 sq.ft. of prime retail space at The Shore, situated in a highly walkable area across from Gyro Beach. Offers excellent exposure to both pedestrian traffic and vehicles along Lakeshore Road. Neighbouring tenants include Shoreline Brewing Co, Diner Deluxe, Hugo's Mexican Kitchen and Marble Slab Creamery. Reserved and additional metered parking available. (id:6769)



Meghan Cortese (O'Mara)

Royal LePage Kelowna

Phone: (250) 862-7038



RE/MAX Kelowna
100-1553 Harvey Avenue
Kelowna, BC,
Canada