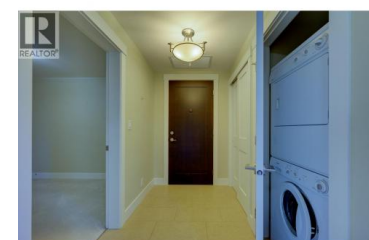




## 1201-1405 Springhill Drive Kamloops British Columbia

Sahali

**\$649,900**



Summit Pointe 2nd floor Corner unit with a fabulous view is one of the largest units in the complex. This modern 2 Bedroom plus Den with 5 piece Ensuite bathroom and 3 piece main bathroom, The kitchen has Granite Counters appliances are Stove, new Fridge, Dish washer / dryer . Flooring is a mix of Bamboo Flooring , carpet and ceramic tile. The deck is one off the largest in complex, parking is secure underground and building access is by secure entry. The grounds are beautifully land scape with lots of trees and shrubs. Shopping and other services are a short walk away. All measurements are approximate and are to be verified by the Buyers if important to them. (id:6769)

**Bob Hardwick**

Royal LePage Westwin Realty

Phone: (250) 318-1843



RE/MAX Kelowna  
100-1553 Harvey Avenue  
Kelowna, BC,  
Canada