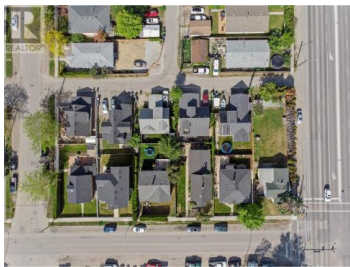


1206 Ethel Street Kelowna British Columbia

Kelowna North

\$1,450,000



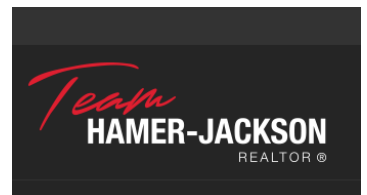
4 Home land assembly, must be sold with 1216, 1220, 1230 Ethel street (total list price \$5,450,000). Total assembly is .60 Acres in size consisting of 4 single family homes (3 of which have carriage homes). Total rental income for all 4 properties \$16,015/m tenants all pay own Electric/gas. City has previously stated that they would support MF3/CA1. Assembly sits in a Core Neighbourhood area (C-NHD) and lines a Transit Supportive Corridor in one of Kelowna's most sought after development areas. Jump on this rare opportunity to secure your legacy & contribution to downtown Kelowna's evolving skyline. 1 hour to Big White, 20 minutes to YLW international airport, 16 minutes to UBCO (along HWY 97) 2 minutes to the future downtown campus, & walking distance to groceries, shopping, restaurants, entertainment, parks, and beaches. Homes being sold ""as is where is."" Selling for LAND VALUE. (id:6769)

David Delorme

Coldwell Banker Horizon Realty

Phone: (778) 821-3885

<http://www.daviddelorme.com/>



RE/MAX Kelowna
100-1553 Harvey Avenue
Kelowna, BC,
Canada